

WEST LOS ANGELES BUDDHIST TEMPLE BULLETIN

2003 Corinth Avenue
Los Angeles, California 90025

(310) 477-7274
E-mail: westlabt@verizon.net

Fax (310) 477-6674
Web Site: www.wlabt.org

Vol. 49, No. 6

June 2006

MAJOR SERVICE FOR JUNE 2006

**Father's Day and Graduation Service,
Annual Scholarship Presentation**

June 18, 10:00 a.m.

(Hamburger Lunch follows)

REV. USUKI'S PAGE

The Bird and the Window (Sunday Dharma School Message)

*The biggest troublemaker you'll probably ever have to deal with,
watches you from the mirror every morning.*

This passage is from *An Old Farmer's Advice* but I'm sure the Buddha also said something like this to warn that the troublemaker is usually you and me! I would like to tell you a story that is still unfolding right at this moment. I often work behind the *Onaijin* (altar area) where there is a sink for arranging flowers and making rice for *Buppan* (rice offering) every week. Next to the work area is a minister's waiting room for guest ministers. The area is also where I can sit and be quiet and reflect on many things, especially when I need to come up with the Dharma message for the weekly Sunday service.

I recently noticed a clicking noise coming from the back room - the back room that has a large window and gets very sunny. One day, I went to check on the clicking noise and found a bird sitting outside on a window bar and pecking on the window (see photo). I also noticed that he does this all day, especially when it is sunny. Why do you suppose he does this? Is he picking at insects? Does he want to come inside? Or, is he crazy?

The window is tinted and has a reflective coating so it reflects the ultraviolet rays. I think when the bird comes near the window he sees himself and mistakes himself for another male bird that is a threat to his territory and he needs to pick a fight. He may also think that the bird is inside the building.

(continued on page 2)

Non-Profit Org.
U. S. Postage
PAID
Los Angeles, CA
Permit No. 20953

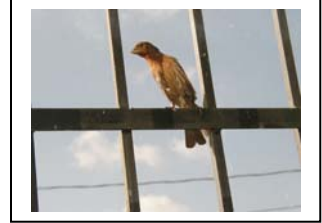
WEST LOS ANGELES BUDDHIST TEMPLE
2003 Corinth Ave.
Los Angeles, CA 90025

Return Service Requested

(continued from page 1)

Many birds and animals are territorial and they don't like having another male around their nesting or mating area and will defend it with their lives. But this bird does not realize that he is picking a fight with himself. Who do you suppose will win? I think the window. It is strong glass and eventually the bird's beak will wear down or crack before he breaks the glass.

So, I watch him do this when I'm in the back room. I also tried to take a photo of him but when I get close to the window, he can actually see a moving image behind the glass so he flies away to a nearby wire and waits. He is more patient than I, and so I have to go back to work. He then comes back and starts the process all over again. But, finally this morning, I was able to take several photos of him. I may have finally won the battle of patience.



Can you imagine being a bird? He doesn't know what a mirror is and he doesn't know that he is seeing himself. He only sees another bird that he needs to get rid of. Do you think he will eventually get tired of pecking on the window? I don't know how much patience this bird has and I don't know how long he's been doing this, so who knows what will happen. I hope he will eventually go away or we may have to install another type of window so he won't hurt himself.

Human beings are like this bird when we are selfish or ignorant. We also can't see that when we get angry or want something beyond reason, we fight our own selfishness and bother others with our own troubles. When this confrontation occurs we also do not realize that we are fighting the self. This is why "*The biggest troublemaker you'll probably ever have to deal with watches you from the mirror every morning.*"

Here's another passage from *An Old Farmer's Advice* that you may want to think about:

Do not corner something that you know is meaner than you.



SHINSHU CORNER

Not My Doing, the Lotus and the Chicken

*The lotus flower blooms beautifully in the dirty pond,
But that's not because of the lotus' efforts.
A baby chick hatches from an egg,
But it doesn't hatch through its own efforts.
That's what I finally became aware of,
But that awareness is not my doing.*

In this poem by Misuzu Kaneko, she expresses her deep feeling for the benevolence of Amida Buddha and his Vow to awaken all of us in this world. The Jodo Shinshu teaching is based on the "Buddha-centered power of the 'Primal Vow'" and we cannot do anything to cause our own enlightenment. Our enlightenment is solely due to the "vow power" of Amida Buddha. This is what Misuzu Kaneko became aware of... There is no need for me to *try to become enlightened*. In fact, such "self-centered effort" is actually a hindrance. That's the attitude that is always expressed in Jodo Shinshu.

Misuzu's World of the Nembutsu, Daishun Ueyama, Nembutsu Press

Pain and Time

At times almost all of us envy the animals. They suffer and die, but they do not seem to make a "problem" of it. Their lives seem to have so few complications. They eat when they are hungry and sleep when they are tired, and instinct rather than anxiety seems to govern their few preparations for the future.

As far as we can judge, every animal is so busy with what he is doing at the moment that it never enters his head to ask whether life has meaning or future. For the animals, happiness consists in enjoying life in the immediate present – not in the assurance that there is a whole future of joys ahead of him.

The Wisdom of Insecurity, a message for an age of insecurity

Allan Watts

(end of Rev. Usuki's Page)

REFLECTION

Jeff Wilson

I once heard a story that summed up the difference between the Path of Sages and the Path of Pure Land. Long ago, a rural village in Japan decided to build a temple and invite a Buddhist monk to come and minister to them. There were two applicants who seemed qualified, so the village decided to put them to a test in order to determine which one would be their new spiritual leader.

In the middle of the village two gigantic iron pots were set up and a fire was lit under each one, bringing the water inside to a boil. Then the two applicants were asked what they would do with the pots to prove their worthiness. The first monk was an advanced Zen meditator. Without batting an eye, he calmly climbed into the first pot, which reached up to his neck. Unaffected by the boiling water, the monk meditated for hours. The villagers were amazed and impressed—here was a monk who truly had amazing powers.

The second applicant was a Shin priest. He didn't have impressive robes like the Zen monk, and he didn't even shave his head. Everyone wondered how he could possibly do better than the first man, especially since while the Zen monk had been quietly preparing himself for his intense meditation, the Shin priest had just been chatting casually with the villagers, asking about their families and how the harvest was going. But when his turn came, the Shin priest gave a big smile and walked up to the second boiling pot. "Quick!" he called out. "Bring me some vegetables and salt!" Puzzled, the villagers gave him what he requested. Whistling to himself, the Shin priest chopped up the veggies and threw them in the pot with the salt. After a while he called out, "Soup's ready!" He served the whole village supper from the big pot, and talked with them late into the night about their hopes and fears, offering advice and telling them to take comfort in Amida's never-abandoning compassion. In the morning, the villagers thanked the Zen monk for coming and asked the Shin priest to stay and minister to their village.

Here we see an important difference between Shin and other types of Buddhism. The self-powered Zen monk was a very impressive meditator, and doubtless he knew the Sutras well and faithfully followed the precepts. With his powers he could maintain mental clarity in any situation, and he probably generated lots of merit that could be dedicated to the deceased members of the village.

The Shin priest, on the other hand, had no special powers. Instead, his approach was to meet ordinary people where they were and see what their everyday needs were. He demonstrated the principle of compassion by feeding everyone and bringing the community together to share and support each other. He didn't need to accumulate merit because he knew that he and the other villagers would all be embraced by Amida and be born in the Pure Land just as they were. In the end, this was a Buddhist teaching which didn't separate the good and the skilled from the rest of the community. I'm grateful that today we still have Shin priests whose concern is not just their own nirvana, but the liberation of everyone.

PRESIDENT'S MESSAGE

Yuki Sakurai

The Chicken Teriyaki Lunch Box Sale was a great success due to all the volunteers who worked tirelessly on the project. Thanks to all organizations for selling and buying tickets. Special thanks to Buddhist Men, Asoka Fujinkai, and BWA for helping to prepare, cook and distribute the chicken teriyaki lunch boxes. It was a lot of work but there was camaraderie among the workers and we all enjoyed working together for the benefit of our temple.

The 2006 Southern District Buddhist Churches and BWA Conference will be held on Sunday, June 11, 2006, from 9:30 a.m. to 3:15 p.m. It will be held at the Hyatt Westlake Plaza Hotel in Westlake Village. The speakers are **Rev. Kodo Umezu** (English) and **Rev. Shoki Mohri** (Japanese). The \$40 registration includes lunch. Registration form and fees are due by May 22 (after May 22, the fee will be \$50). A bus will leave WLBT at 8:15 a.m. and leave Westlake Village at 3:15 p.m.

The theme of the conference is *Live a Life of Awakening*. Hosts Oxnard Buddhist Temple and Pasadena Buddhist Church promise a very interesting conference. Your attendance is encouraged. Please sign up at the office.

The WLBT Obon Festival is around the corner, specifically, on July 29 and 30, 2006. Save those dates. Our Obon chairman, **Tosh Ishioka** and his committee have been working towards one of our grandest festival in recent years. This year, the obon dancing will take place on the street, leaving more room for games and food booths in our parking lot. Many organizations from the community will be joining us so we will have a variety of new games and exotic foods for the attendees this summer.

July 9, 2006 will be our Obon service. At that time, a special candlelight ceremony will take place for those members who passed away between July 2005 and June 2006. Obon is the time when families and friends reminisce over our loved ones who have left us.



CONDOLENCES TO THE FAMILIES OF:

MRS. TATSUYE MIYATA
11/18/1916 – 4/20/2006

MRS. MISAO DOHI
5/11/1922 – 4/22/2006

MRS. EMIKO NAKAMURA
4/11/1919 – 4/24/2006

DHARMA SCHOOL NEWS

Grace Mizushima

On Sunday April 9, 2006 we had our annual Hanamatsuri Service. The Dharma School Teachers and students busily prepared the Hanamido on the previous day, Saturday April 8th. Thank you to **Diane, Nathan and Ryan Ohkawahira**; **Kylie and Justin Mizushima**; and **Maya and Mona Narumi** for helping us out that day. Thank you also to **Mrs. Kayo Ohkawahira** for picking up the flowers once again so that our Hanamido would look as colorful and beautiful as usual.

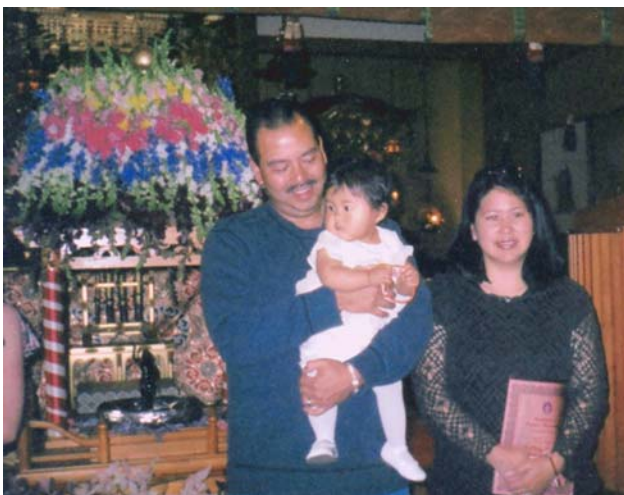


Finally, thank you for the many generous donations of flowers from the personal gardens of our temple families.

This year we had two babies presented during the Hatsumairi Service held in conjunction with the Hanamatsuri Service. One was **Wenli Nicole Hiromi Nakata** (below), daughter of **Connie and Todd Nakata** and granddaughter of Temple President, Mrs. Yuki Sakurai.



The other Hatsumairi baby was **Kenna Ami Tagawa** (below), daughter of **Kathy and Russell Tagawa**; and granddaughter of **Bob and Noriko Matsumoto**.



Welcome to the two new babies. We look forward to seeing them at Dharma School very shortly!

Dharma School teachers, please save Saturday, September 9, for the 2006 SDDSTL Conference. The conference will take place at Oxnard Buddhist Temple with the theme, *Living Together in a World of Oneness*. The guest speaker will be **Rev. Tetsuo Unno**. Details will follow later.

TAIKO NEWS

Rick Stambul

If you haven't heard the music, energy, and sheer joy of our Taiko Group and its members each Wednesday evening, then you haven't been at the Temple at 7:30. You're missing out on the fun! Whether you're 8 years old or 98, you are cordially invited again to come out to any practice on any Wednesday night at 7:30 to participate in or just watch the joy of taiko.

The group has also been busy with other matters that we're quite excited about. Labels to recognize taiko donors have been ordered and we expect their arrival well before you're reading this update. Thanks to the efforts of our advisor, **Rev. Usuki**, the Taiko T-Shirts he has been working on are out for bids and we all expect a reply shortly. Both **Ichiro Ouchi** and **Rev. Usuki** have been busy making taiko in our Taiko Workshop (also known as the garage) and it's been reported that they're all on schedule for completion by our July Obon Carnival. Thank you both!

This reporter's attendance at a recent Wednesday taiko practice session found many new members attending, and apparently on a regular basis. Spirits are high and everyone involved seems to be getting more excited as their skills and level of enjoyment increases. We are still looking into cleaning up the basement for a better practice environment, and for new percussion "instruments" to back up our Taiko Group. **Chico and Isabelle Jimenez**, our group's earliest supporters who provided us with the "know-how" to build our own taiko, are eagerly looking forward to our 2006 Obon and to watching our fledgling Taiko Group play an encore of last year. Our never ending appreciation goes to our selfless teachers, **Elaine Fukumoto**, **Joyce Layne**, and **Audrey Nakasone** all of whom travel great distances to teach us and perform with us every week. Ka-Boom!

GOURMET ACADEMY

12 Noon, Sunday, June 4, 2006

Temple Social Hall

CHAWAN MUSHI

A custard-like steamed cup having many ingredients such as chicken, *kamaboko* (steamed fish), and *gingko* bean

KIMPIRA GOBO

A highly seasoned, soy-based, spicy, sliced *gobo* (burdock root).

Mrs. Yoshiko Iwashita of Asoka Fujinkai is prepared to demonstrate how she makes two traditional dishes served in Japanese households.

This is another activity of the Temple's Gourmet Academy that is designed to bridge the generations of our Sangha.

Dr. Jack Fujimoto

NEWS FLASH! OVER 400 CHICKEN-EATERS INVADE WLA TEMPLE!!!

Rick Stambul



The author: "Hey I don't like this 3rd (cleanup) shift."

Our first (in recent memory, that is) Teriyaki Chicken Fundraiser was a great success! Over 400 "chicken-eaters" invaded WLA Temple on April 9 to help the Temple raise funds; to socialize; and to dine with (and on) our good friend, the Chicken. The food was delicious and beautifully served according

to the many people who contacted us with an "after-eating" critique. We served up a large, succulent, and moist half chicken marinated overnight with West LA's secret teriyaki recipe, rice, and cabbage salad (garnished with a touch of carrot-orange) to complete our "professional" presentation.



l to r: Three roosters Masao Sasaki, Jim Shimomaye, and Vance Nishimoto point to late hen mascot.

We sold 422 servings (that's 211 whole chickens!) according to our diligent treasurer, **Lorraine Soda**, along AND our mascot, the "rubber chicken" who never gave up; was present every step of the way and helped announce our fundraising event at every opportunity without complaint!

Imagine the planning and execution of this wonderful "Cluck Sale": buying more than 200

chickens; cleaning each one; preparing the marinade and marinating the chickens and storing them in our newly cleaned and spotless walk-in refrigerator; and cooking them ahead of time.



Head Chef "Wolfgang Puck" Jim Shimomaye shows off his new toy, a high volume convection oven.

Try the math: That's more than 400 servings cooked for about an hour in our convection oven with about 60 servings per load, or about 7 hours of cooking; temporarily storing the chickens; and then completing the cooking cycle with our 400 servings spending even

more time in the oven. Whew!

The rice was perfect, and the cabbage salad and its special ingredients rounded out the entire "bento" box.

Wait till next year: The chickens will change but our Mascot rubber chicken will be there to remind all of you to just come as you are.....and eat!

With the help of so many people we can't offer our appreciation to everyone who helped. However, we do gratefully thank Asoka Fujinkai, BWA, and Buddhist Men for their great contribution of time and effort. Thanks also to **Masao Sasaki** and **Jack Fujimoto** for their photographic efforts some of which are shown in this edition of our Bulletin. Special thanks goes to

our Chicken Committee members including **Masako Ishioka**, **Vance Nishimoto**, **Chiyo Nitta**, (our intrepid leader) **Yuki Sakurai**, **Jim Shimomaye**, **Yasuko Shohara**, **Lorraine Soda**, **Rick Stambul** (in alphabetical order).

Finally, our biggest "thank you!" to all of you who traveled to the Temple that Sunday to buy and then eat our Teriyaki Chicken Bento, and by doing so, supported our Temple.



(above l to r: Yuki Sakurai, Chiyo Nitta, Kazuko Seike and Lorraine Soda. "Hey, it's too hot yet!" "No, it's not." "Yes it is.")



(above l to r: Alyce Shinmoto, Nobuko Kozawa, Kazuko Seike (standing), Kiyoka Totani (seated), Chiyo Nishina, Kay Kafka, Chiyo Nitta, and Ikuko Yamamoto. "How many more napkins and *hashi* do we have to put together? 400 more? Maybe we should organize a boycott.")



(Jack Fujimoto (l) and Hidemi Ohkawahira (r) load chicken into trays under the watchful eye of Head Chef Jim Shimomaye.)



(above l to r: Kiyoka Totani, Kay Kafka and Masako Ishioka. "Hey, don't put in so much salad. We have 400 more boxes to go!")

CULTURAL INFLUENCE SURVEY

This survey is to recognize how cultural differences formulate our decisions on all subjects. Ethnic groups, Japanese Americans and Anglo Americans, are being studied to observe how the next generations may be influenced by the surroundings in which they live.

The survey being conducted here at our Temple is for all Japanese Americans and Anglo Americans that meet the qualifications noted below.

Please take this survey to help Kimberly Hiroto compile data for her Master's thesis.

Masao Sasaki

RESEARCH PAPER

General Subject:

Does culture influence Anglo and Japanese American's on thoughts or ideas on Medical Decisions within the family.

Sunday, June 10, 2006

Time: After 11:00AM to 1:30PM

Take a 30-40 minute paper survey after the WLA BWA meeting. Location is at the Social Hall and all necessary items will be provided.

Research Topic

Medical Decision Making within the Family

*Master's Thesis Topic of Kimberly Hiroto
University of Colorado, Colorado Springs
IRB # 05-105*

Qualifications for the survey

*Japanese American (Self identifies as Japanese American/Nikkei)
Anglo American (Self identifies as Anglo American/White)
Able to read English
18 years and older
(Does not have to be a member of the Temple)*

\$5.00 will be donated to the Buddhist Temple for each survey completed.

For more information, call Masao Sasaki (310) 477-3961

All information will be kept anonymous

DRAFT

1. Everyone, check your assignments.
2. Any changes? Call Tosh Ishioka at 310-398-2902.
3. Please attend Obon meeting on June 20 at 7:00 p.m.

2006 WLA OBON FESTIVAL AND ODORI
July 29, 30, 2006
COMMITTEES (* = chairperson)

CHAIRPERSON	Tosh Ishioka (Ch), Glenn Bungo
Booth Construction	All organizations
Booth Construction Lunch	Chiyo Nitta, BWA
Cleaning Crew	All organizations
Electrical	Ichiro Ouchi, Hidemi Ohkawahira
Exhibits	Mas Sasaki
Exterminator	Dorothy Ikkanda
Odori Dressers	Kay Kafka, Sumiko Kimura, Sayoko Yamanaka
Odori Drummers	Jack Fujimoto, Eddie Nakamura, Bob Ishikawa
Odori Instructors	Grace Mizushima, Dharma School Staff
Odori M. C.	Dr. Jack Fujimoto
Odori Monitors	John Ikkanda, Sei Shohara
Odori Practice Refreshments	Chiyo Nitta, All organizations
P. A. System	Vance Nishimoto
Parking (Trident Center)	Sei Shohara
Permits: City, Fire, Health	Tosh Ishioka
Publicity: Newspaper	Beverly Yahata
Publicity: Posters	Dorothy Ikkanda
Raffle	Roy Higa & Victor Naramura (Ch), Itsy Higa, Nob & Lily Kamibayashi, Hajime & Yukiko Nonoguchi, Joe & Miki Uyeda
Raffle Tickets: Printing	Dorothy Ikkanda
Raffle Tickets: Mailing	Alice Umeda & Tussy Umeda, Lorraine Soda
Security	Tosh Ishioka
Signs: Booth	Jim Shimomaye
Signs: Direction	Sei Shohara
Signs: Obon and Parking	Ted Takahashi
Tea	Dorothy Ikkanda
Tickets (Comp) Printing	Sei Shohara
Toilets (Portable)	Tom Ikkanda
Trash Bags (Purchase)	Hidemi Ohkawahira
Trash Dumpster	Tom Ikkanda
Treasurers	Kei Okamoto (Ch), Mike Hara, Dennis Mori, Tak Morimoto, Ted Takahashi
Yagura Construction	Vance Nishimoto
Yagura Decoration	YABA, Jim Shimomaye

BOOTHS

Booth	WLABT Organization	Chairpersons
BEEF TERIYAKI	Jr. YBA	Jim Shimomaye
BEER	Buddhist Men	Sho Matsumi, Milton Iwamoto
BINGO	Temple	Bob Fujimoto
CHICKEN TERIYAKI	YBA	Jim Shimomaye
DOUGH BALL	YBA	Jim Shimomaye
FISH BOWL	Temple (LA Betsuin Hui Aikane)	Yuki Sakurai
FISH TACO		Mike Naoe, Scott Okamura
GAME 1		Connie Yahata
GAME 2		Okita, Judy
HOT DOG	Buddhist Men	Stanley Ikeda
ICE SHAVE	Taiko	Hidemi Ohkawahira
RING TOSS	Dharma School	Tracy Ohkawahira
SUSHI	BWA	Lorraine Soda, Kiyoko Nakamura
SOFT DRINKS	Dharma School	Hidemi Ohkawahira, Betty Takahashi
UDON	Buddhist Men	Sam Hada
WONTON/CHICKEN WING	Asoka Fujinkai	Shoko Kishi

HELP WANTED

We REALLY, REALLY need your help in most phases of the Obon Festival. This includes Raffle, Bingo and other game booths, Odori Monitors (helping to keep the circle of *odori* dancers moving smoothly), and general maintenance and support functions. If you can lend us a hand, please sign up at the Temple Office, 310-477-7274.

JUNE SHOTSUKI HOYO - 10 a.m. Saturday, June 3, 2006

Akashi, David
Akutagawa, Taro
Amiya, Katsuyoshi
Gomez, Bernard
Harada, Kakuji
Hayashi, Yoshio
Higa, Tomohiko
Hirano, Kimiko
Ikeda, Eki
Inouye, Sueo
Inouye, Margaret
Ishikura, Yoshio
Iwasaki, Echiko
Kagawa, Harry
Kagawa, Rich
Kamibayashi, Roy

Kato, Nobukazu
Kawahara, Sachiko
Kawamura, Frank
Kikunaga, Joe
Kobayashi, Masasuke
Kobayashi, Tamako
Maeda, Edith
Matsumiya, Hama
Matsuura, Kanjiro
Minato, Joe
Miyahara, Kazuko
Miyamoto, Yukino
Mori, Taka
Mori, Masaki
Morikawa, Yae
Morioka, Kentaro

Nakamura, Tatsunosuke
Niiya, George
Nishi, Nijiro
Nishimoto, Asayo
Nishimoto, Masao
Nishimura, Frank
Noda, Mitsuaki
Okimoto, Yuriko
Okita, Setsuyo
Oyanagi, Sumiko
Oyanagi, Tetsu
Sakahara, Kiyoshi
Sato, Marion
Shinmoto, George
Shirai, Kimiyo
Shirasawa, Katsusuke

Takata, Ikuo
Takayama, Tsune
Takayama, Tom
Takazumi, Hatsu
Takeuchi, Michiko
Takeuchi, Bea
Tanaka, Jungo
Tanaka, Kiwa
Tominaga, Harry
Uyeda, Kazuo
Uyeda, Shoso
Yamada, Kohei
Yamanaka, Gregory
Yoshimi, Gerald

Bingo

Third Friday of each month.

Come support your Temple.

7:30 p.m.

SAVE THESE DAYS TO COME AND HELP OUR OBON

7/21	Fri	06:00 pm	Booth take-out
7/23	Sun	08:00 am	Booth setup & Garden cleanup
7/29	Sat	05:00 pm 10:00 pm	Obon Odori & Festival
7/30	Sun	03:00 pm 09:00 pm	Obon Odori & Festival
7/31	Mon	07:00 pm	General take-down
8/1	Tue	07:00 pm	Booth take-down & cleanup

FROM THE WLABT ARCHIVES



1939 Obon Odori

Sunday	Monday	Tuesday	Wednesday	Thursday	Friday	Saturday	
JUNE 2006 Office hours: 10 am – 4 pm Phone: 310-477-7274 E-mail: westlabt@verizon.net Website: wlabt.org				1 1 pm Study Class (E)		2 10 am Shotsuki Hoyo 2 – 5 pm Taiko-Making Session	
4 8 am Temple and Garden Clean-up NO Sunday Services	5 7:30 pm Temple Board Meeting	6 <div style="border: 1px dashed black; padding: 2px; width: fit-content; margin: 0 auto;">Rev. Usuki Off</div>	7 7:30 pm Taiko	8 1 pm Study Class (E) 7:30 pm Buddhist Men Meeting	9 <div style="border: 1px dashed black; padding: 2px; width: fit-content; margin: 0 auto;">Rev. Usuki Off</div>	10 10 am BWA Service and Meeting	
11 8:15 am Bus Departure for Hyatt Westlake SD Buddhist and BWA Conference NO Sunday Services	12 <div style="border: 1px dashed black; padding: 2px; width: fit-content; margin: 0 auto;">Rev. Usuki Off</div>	13 <div style="border: 1px dashed black; padding: 2px; width: fit-content; margin: 0 auto;">SD Ministers' Fuken at Santa Barbara</div>		14 7:30 pm Taiko	15 1 pm Study Class (E) <div style="border: 1px dashed black; padding: 2px; width: fit-content; margin: 0 auto;">Rev. Usuki Off</div>	16 7:30 pm BINGO	17 10 am – 2 pm Taiko-Making Session
18 10:00 am FATHERS' DAY and GRADUATION SERVICE; SCHOLARSHIP AWARDS Service Toban: Jr. YBA Hamburger Lunch to follow - Toban: YBA	19 12 Noon 80+ Lunch	20 7 pm Obon Meeting	21 7:30 pm Taiko	22 1 pm Study Class (E) <div style="border: 1px dashed black; padding: 2px; width: fit-content; margin: 0 auto;">Rev. Usuki Off</div>	23	24 9 am – 3 pm 80 Plus YARD SALE	
25 9:30 am Sunday Service/Dharma School Study Class (E) 12 Noon Shigin Kinryu Kai	26 <div style="border: 1px dashed black; padding: 2px; width: fit-content; margin: 0 auto;">Rev. Usuki Off</div>	27 7:30 pm Bon Odori Practice	28 7:30 pm Taiko 7:30 pm Asoka Fujinkai Meeting	29 1 pm Study Class (E) 7:30 pm Bon Odori Practice	30 <div style="border: 1px dashed black; padding: 2px; width: fit-content; margin: 0 auto;">Rev. Usuki Off</div>	6/23-25 SD Jr. YBA Seminar III retreat at Morning Star	